

# TAHOE MASTER PLAN

- Wilderness
- Backcountry
- Conservation
- Recreation
- Mixed-Use
- Residential
- Tourist

SOURCE : Tahoe Regional Planning Agency/Washoe County Planning and Building Division

PC Date:  
BCC Adoption Date:

NOTE: THE SCALE AND CONFIGURATION OF ALL INFORMATION SHOWN HEREON ARE APPROXIMATE ONLY AND ARE NOT INTENDED AS A GUIDE FOR DESIGN OR SURVEY WORK. REPRODUCTION IS NOT PERMITTED WITHOUT PRIOR WRITTEN PERMISSION FROM THE WASHOE COUNTY PLANNING AND BUILDING DIVISION.

CERTIFICATION: THIS DOCUMENT HAS BEEN REVIEWED AND APPROVED AS AN ACCURATE REPRESENTATION OF THE ADOPTED ZONING MAPS OF WASHOE COUNTY, NEVADA, BY THE WASHOE COUNTY PLANNING AND BUILDING DIVISION.

DATE \_\_\_\_\_ DIRECTOR \_\_\_\_\_

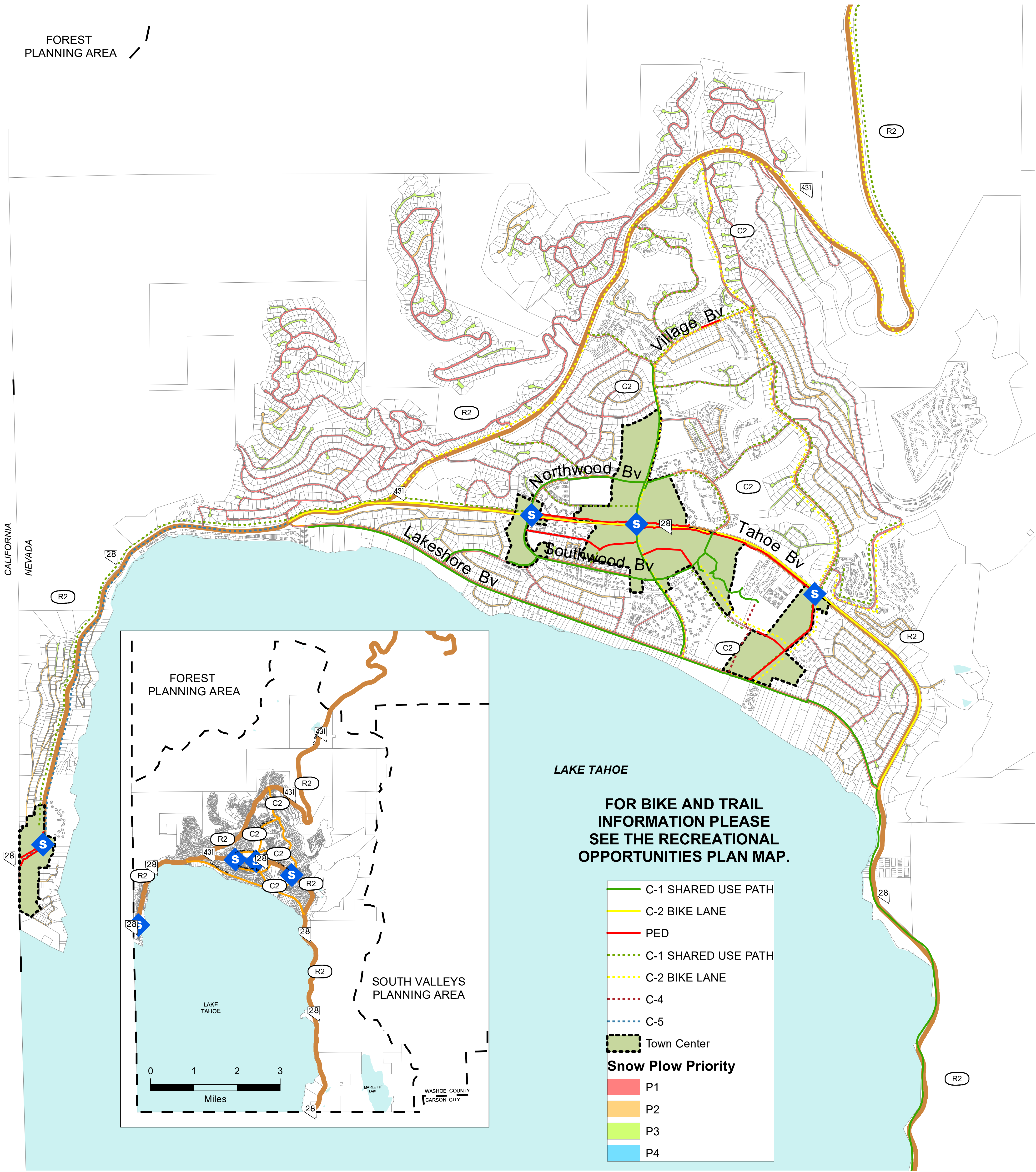
Community Services  
Department

WASHOE COUNTY  
NEVADA

1001 E Ninth St  
Reno, Nevada 89512 (775) 328-3600



FOREST  
PLANNING AREA



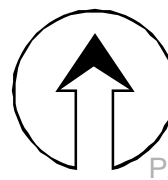
## TAHOE LOCAL TRANSPORTATION NETWORK

EXISTING	PROPOSED	
		FREEWAY
		ARTERIAL
		RURAL HIGHWAY
		COLLECTOR
		GRADE SEPARATED INTERCHANGE
		SIGNALIZED INTERSECTION

### PLANNED GEOMETRIC DESIGN

	DEGREE OF ACCESS CONTROL
H -	HIGH CONTROL
M -	MODERATE CONTROL
L -	LOW CONTROL
U -	ULTRA LOW CONTROL
	NUMBER OF TRAFFIC LANES
	FUNCTIONAL CLASSIFICATION
F -	FREEWAY
A -	ARTERIAL
C -	COLLECTOR
R -	RURAL
L -	PRIVATE/LIMITED ACCESS
E -	EMERGENCY

NOTE: THE SCALE AND CONFIGURATION OF ALL INFORMATION SHOWN HEREON ARE APPROXIMATE ONLY AND ARE NOT INTENDED AS A GUIDE FOR DESIGN OR SURVEY WORK. REPRODUCTION IS NOT PERMITTED WITHOUT PRIOR WRITTEN PERMISSION FROM THE WASHOE COUNTY COMMUNITY SERVICES DEPARTMENT.



0 750 1,500 3,000  
Scale in Feet

Community Services  
Department

WASHOE COUNTY  
NEVADA



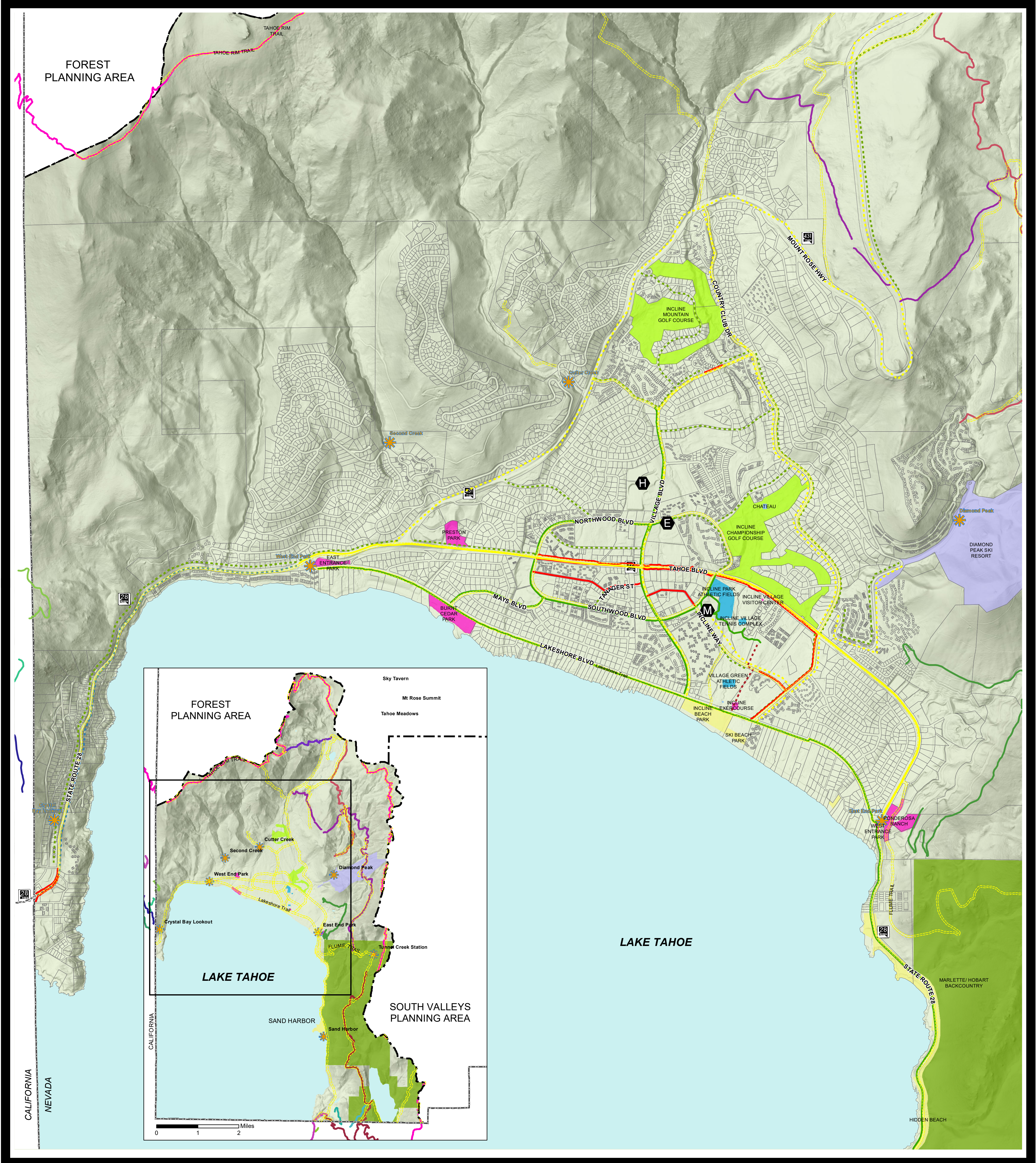
1001 E Ninth St  
Reno, Nevada 89512

(775) 328-3600

YEAR 2025 ROADWAY NETWORK PROVIDED BY THE REGIONAL TRANSPORTATION COMMISSION, EXCEPT FOR MOST COLLECTORS. ADDITIONAL RIGHT OF WAY MAY BE NEEDED TO ACCOMMODATE FULL MASTER PLAN DEVELOPMENT IN THE REGION

WCPC ADOPTION DATE :  
BCC ADOPTION DATE :





TAHOE

RECREATIONAL OPPORTUNITIES PLAN

USFS TRAIL NAME

- INCLINE FLUME TRAIL
- KINGS BEACH
- MARLETTE AREA
- STATELINE LOOKOUT TRAIL
- STATELINE VISTA
- TAHOE RIM TRAIL
- TYROLIAN DOWNHILL

- TRAIL HEAD
- WC PARKS TRAILS

- SCHOOL (E-Elementary, M-Middle, H-High)

EXISTING BIKE/PED PATHS/LANES

- C-1 SHARED USE PATH
- C-2 BIKE LANE
- PED

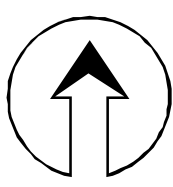
PROPOSED BIKE/PED PATHS/LANES

- C-1 SHARED USE PATH
- C-2 BIKE LANE
- C-4
- C-5

RECREATIONAL FACILITY

- BACKCOUNTRY AREA
- COMMUNITY REC CENTER
- COMMUNITY SPORTS AND REC
- DAY USE AREA
- DAY USE BEACH
- GOLF
- HIKING TRAIL
- SKI RESORT

NOTE: THE SCALE AND CONFIGURATION OF ALL INFORMATION SHOWN HEREON ARE APPROXIMATE ONLY AND ARE NOT INTENDED AS A GUIDE FOR DESIGN OR SURVEY WORK. REPRODUCTION IS NOT PERMITTED WITHOUT PRIOR WRITTEN PERMISSION FROM THE WASHOE COUNTY COMMUNITY SERVICES DEPARTMENT.



0 750 1,500 3,000 Scale in Feet

PATH : G:\arcdata\planarea\ta\2018\_AREAPLAN\rec\_op\_2019.mxd

Community Services  
Department

WASHOE COUNTY  
NEVADA



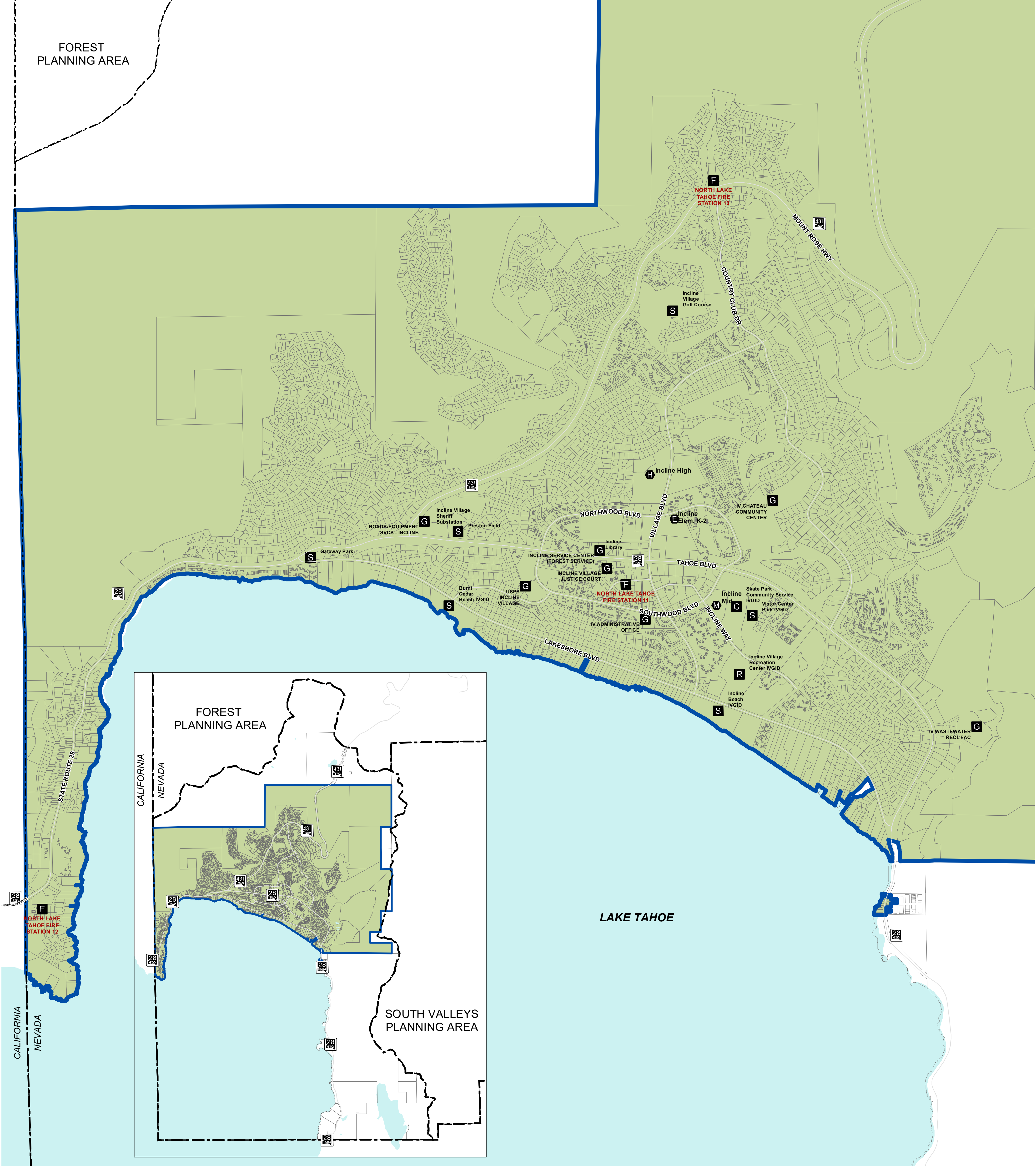
1001 E Ninth St  
Reno, Nevada 89512

(775) 328-3600

SOURCE: Tahoe Regional Planning Agency/Washoe County Planning and Building Division

WCPC ADOPTION DATE:  
BCC ADOPTION DATE:





TAHOE

# PUBLIC SERVICES & FACILITIES PLAN

PUBLIC FACILITIES (Existing)

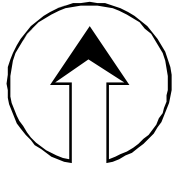
- F** FIRE STATION
- E** SCHOOL  
(E-Elementary, M-Middle, H-High)
- G** GOVERNMENT BUILDING  
(Libraries, Administration Buildings, etc.)
- C** PARK  
(C-Community, R-Regional, N-Neighborhood, S-Special Use)

Please refer to TAHOE REGIONAL PLANNING AGENCY.

 INCLINE VILLAGE GID

\* Incline Village GID provides community water, community wastewater and recreational services within its service area.

NOTE: THE SCALE AND CONFIGURATION OF ALL INFORMATION SHOWN HEREON ARE APPROXIMATE ONLY AND ARE NOT INTENDED AS A GUIDE FOR DESIGN OR SURVEY WORK. REPRODUCTION IS NOT PERMITTED WITHOUT PRIOR WRITTEN PERMISSION FROM THE WASHOE COUNTY COMMUNITY SERVICES DEPARTMENT.



0 750 1,500 3,000 Scale in Feet

PATH: G:\arcdata\planarea\ta\2018\_AREAPLAN\psf\_2019.mxd

## Community Services Department

**WASHOE COUNTY NEVADA**

1001 E Ninth St  
Reno, Nevada 89512

(775) 328-3600